

# BULK SAMPLING SAMPLEX CS6000



## CS6000 JOINS SAMPLEX RANGE OF CS MACHINES

Samplex have designed and manufactured the latest model into the CS Bulk Sampler range. The CS6000 combines the accurate and repeatable sampling process; now with lateral movement allowing even longer trailers and railway trucks to be sampled. The CS6000 still uses the Samplex proven electro-mechanical technology, eliminating hydraulics, the risks of pressure hoses splitting and contaminating loads.

The CS6000 is more than capable of sampling standard sized loads, while still exceeding the standards as set out in ISO 24333 : 2009 (E)

- ✓ Dry powders and milled products
- ✓ Seeds
- ✓ Cereals
- ✓ Grains
- ✓ Pulses
- ✓ Animal feed pellets
- ✓ Wood pellets



Full System Specification available at

**Web:** [www.tekpro.com](http://www.tekpro.com)

**Email:** [info@tekpro.com](mailto:info@tekpro.com)

**Tel:** +44 (0) 1692 403403

**Fax:** +44 (0) 1692 404955

TekPro Limited - Willow Park - North Walsham - Norfolk - NR28 0BD - UK



# BULK SAMPLING SAMPLEX CS6000



## SPECIFICATIONS

**Electricity Supply :** 400V 3 Phase  
50/60Hz + N (2.7Kw)

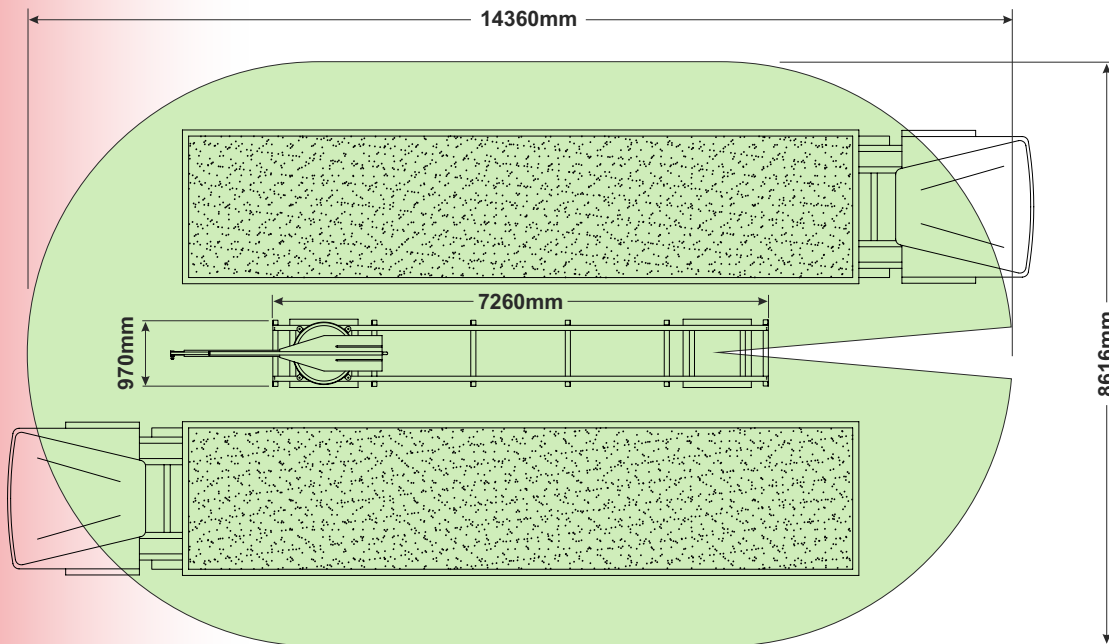
**Time to Traverse :** 15 Seconds

**Sampling Time :** 11 Seconds

## CS6000 JOINS SAMPLEX RANGE OF MACHINES

The CS6000 retains all of the CS60 and CS90 features including Bottom of Load Detection, Fully Programmable Automatic Operation, 340° Rotation, Variable Sample Volume, Easy and Safe Operation, manufactured under the ISO9001 Quality System and has ATEX Certification.

### Sampling Area:

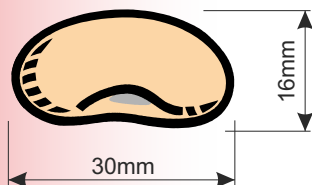


**Installation :** Minimal assembly required

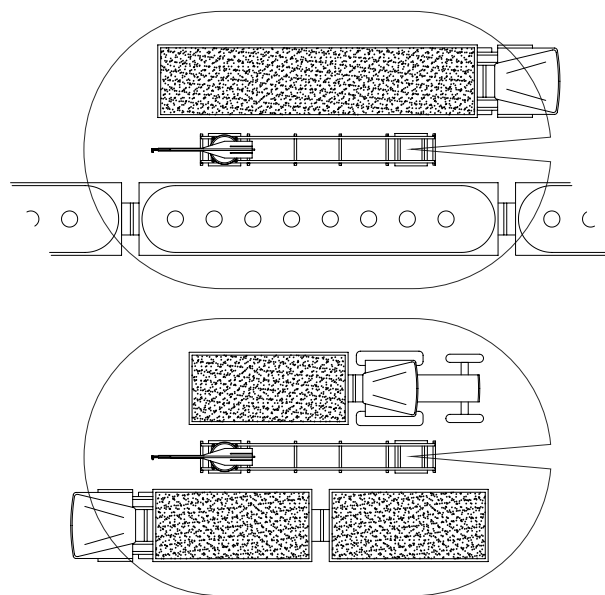
### Standard Finishes :

**Machine Head** Industrial Grade Galvanising  
**Rails and Support** Industrial Grade Galvanising  
**Transfer Tubes** Stainless Steel  
**Transfer Hoses** Food Grade Anti-Static Polyurethane (PU)

### Maximum Sample Product Size :



Engineered to last, the new CS6000 is tough, durable, simple to operate and has minimum maintenance. High quality components selected throughout it's design along with food grade stainless steel and transfer hoses, ensures contamination free samples. The tried and tested Samplex UniSpear will also deliver truly representative samples of the entire load.



Full System Specification available at

**Web:** [www.tekpro.com](http://www.tekpro.com)

**Email :** [info@tekpro.com](mailto:info@tekpro.com)

**Tel :** +44 (0) 1692 403403

**Fax :** +44 (0) 1692 404955

TekPro Limited - Willow Park - North Walsham - Norfolk - NR28 0BD - UK

